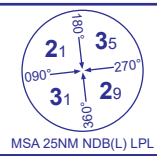


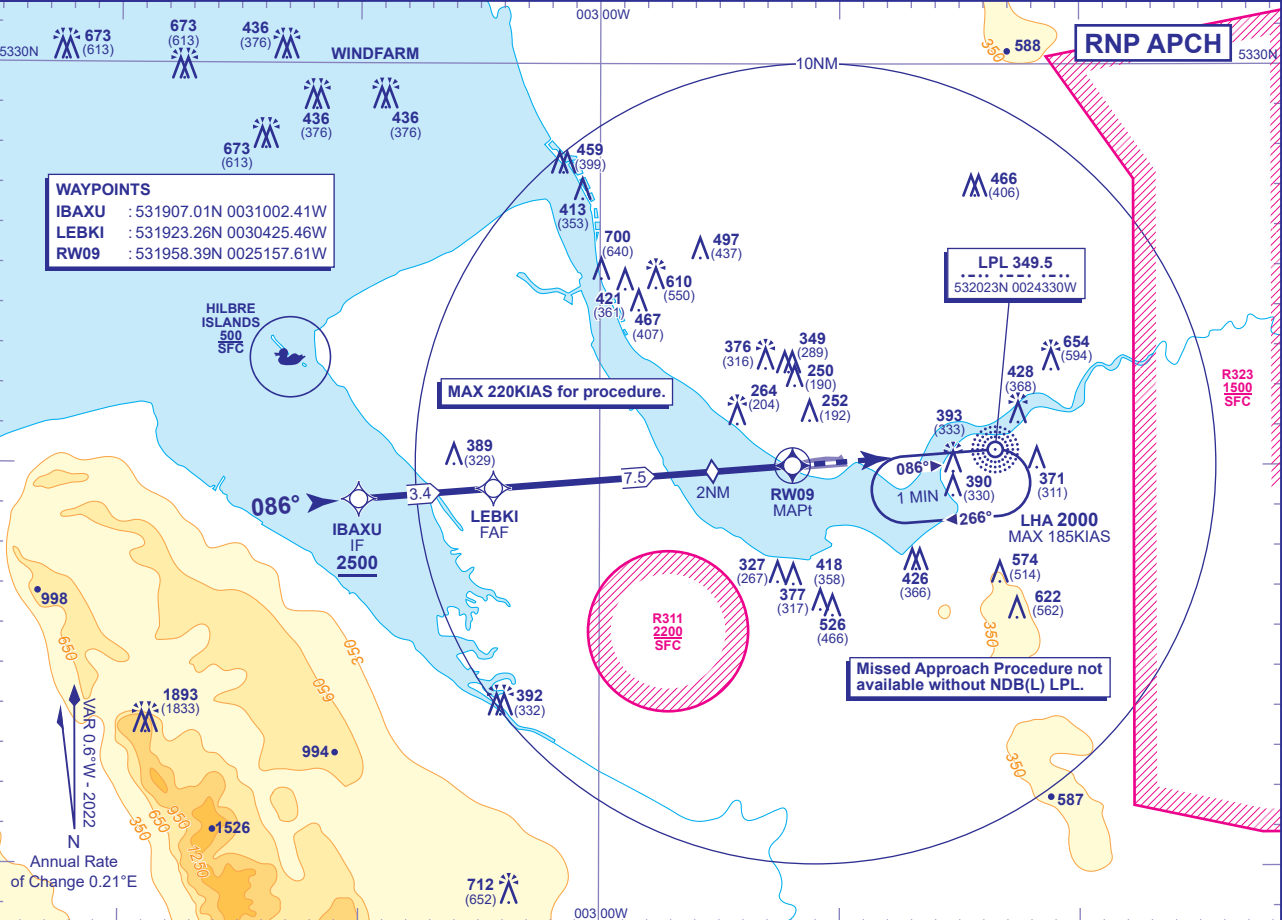
INSTRUMENT APPROACH CHART - ICAO

LIVERPOOL



| | | | | |
|------|------------------|-----------------------|-----------------------|---------------------------------|
| APP | 119.855 | LIVERPOOL APPROACH | AD ELEVATION | 81 |
| TWR | 126.355 | LIVERPOOL TOWER | THR ELEVATION | 60 |
| | 121.955 | LIVERPOOL GROUND | OBSTACLE ELEVATION | 1893 AMSL (1833) (ABOVE THR) |
| RAD | 118.455, 119.855 | LIVERPOOL RADAR | BEARINGS ARE MAGNETIC | |
| ATIS | 124.330 | LIVERPOOL INFORMATION | | |

| |
|----------------------------------|
| RNP RWY 09 (ACFT CAT A,B,C,D) |
| MIN TEMP -15°C |
| TRANSITION ALTITUDE 5000 |



RECOMMENDED PROFILE VERTICAL PATH ANGLE 3.0° (LNAV 5.2%), 320FT/NM

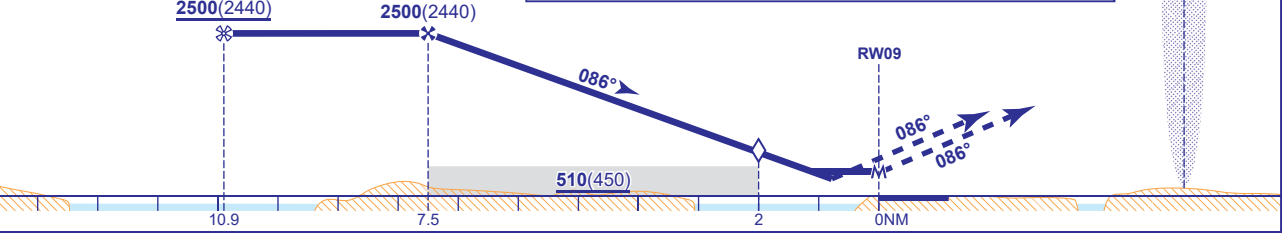
| | | | | | | | |
|------------|------------|------------|------------|------------|------------|----------|----------|
| NM to RW09 | 7 | 6 | 5 | 4 | 3 | 2 (SDF) | 1 |
| ALT(HGT) | 2340(2280) | 2020(1960) | 1700(1640) | 1390(1330) | 1070(1010) | 750(690) | 430(370) |

Arrival not below 2500 or higher MSA.

TCH 54

MAPt (LNAV) RW09

Climb straight ahead to NDB(L) LPL climbing to 2500. Aircraft which achieve 1700 (7% climb grad req) by NDB(L) LPL enter hold and continue climb to 2500 or as directed. Aircraft unable to achieve 1700 by NDB(L) LPL inform ATC and continue on NDB(L) LPL QDR 086° to 1700 then turn left to NDB(L) LPL climbing to 2500 or as directed.



| Aircraft Category | | A | B | C | D | Rate of descent | G/S KT | 160 | 140 | 120 | 100 | 80 |
|-----------------------|-----------|------------|----------|----------|----------|-----------------|--------|-----|-----|-----|-----|-----|
| OCA (OCH) | LNAV/VNAV | 360(300) | 360(300) | 360(300) | 360(300) | | FT/MIN | 850 | 740 | 640 | 530 | 420 |
| | LNAV | 430(370) | 430(370) | 430(370) | 430(370) | | | | | | | |
| VM(C)OCA (OCH AAL) | | Total Area | 550(469) | 670(589) | 930(849) | 970(889) | | | | | | |

- NOTE 1 Missed approach shall be converted to a conventional missed approach upon reaching 1700.
2 Continuous final descent (in accordance with EU-OPS 1.43(d)) is available by request to ATC.
3 Procedure is only available when Liverpool RADAR is operational.
4 Pilots to request RNP approach on first call.

CHANGE (2/25): RESTRICTED AREA R323 ADDED.